

# Characteristic features

- • Have no valves, hence the blood can flow in either direction in the sinuses,
- • Are devoid of smooth muscle fibres in their walls,
- • **Drain finally into the internal jugular veins,**
- • Have cerebral, diploic and some meningeal veins as their tributaries,
- • Communicate via valveless emissary veins with the extracranial veins through skull foramina.

## Base of Skull, Internal Aspect

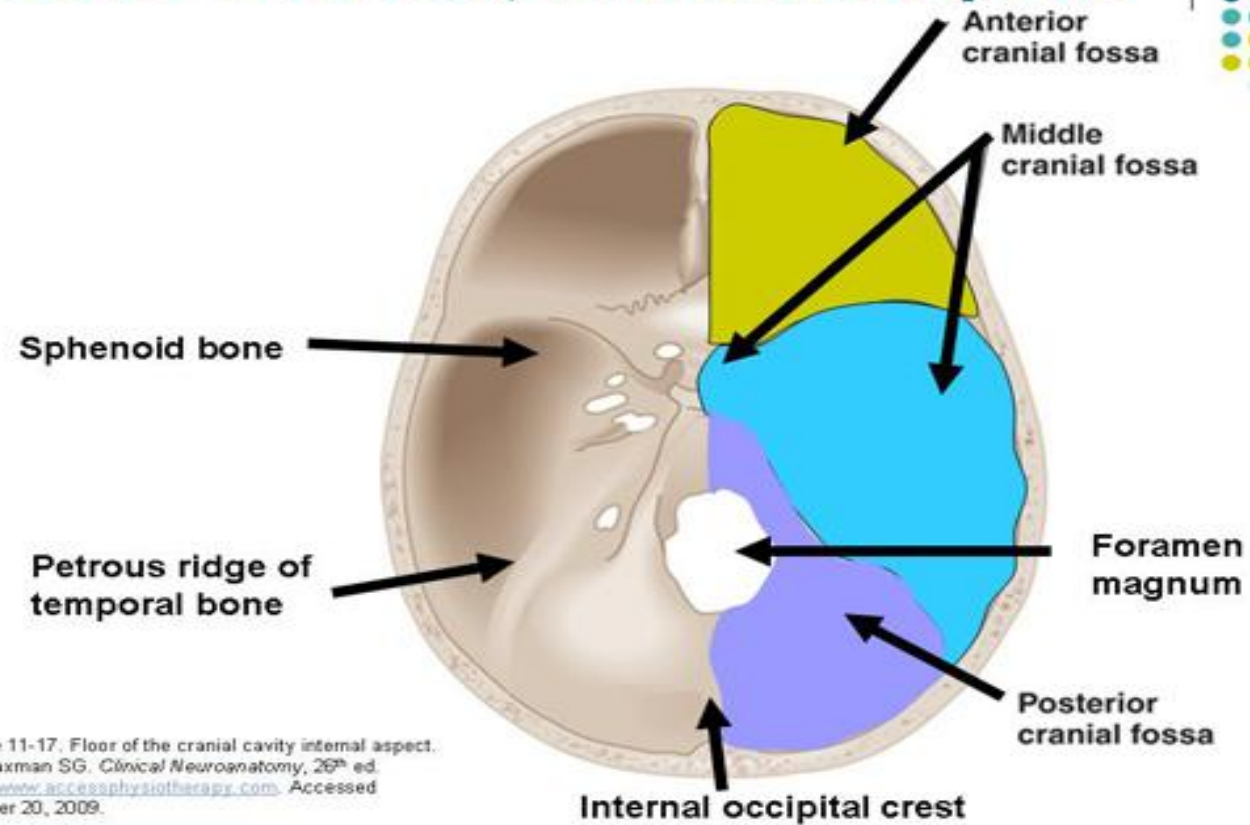
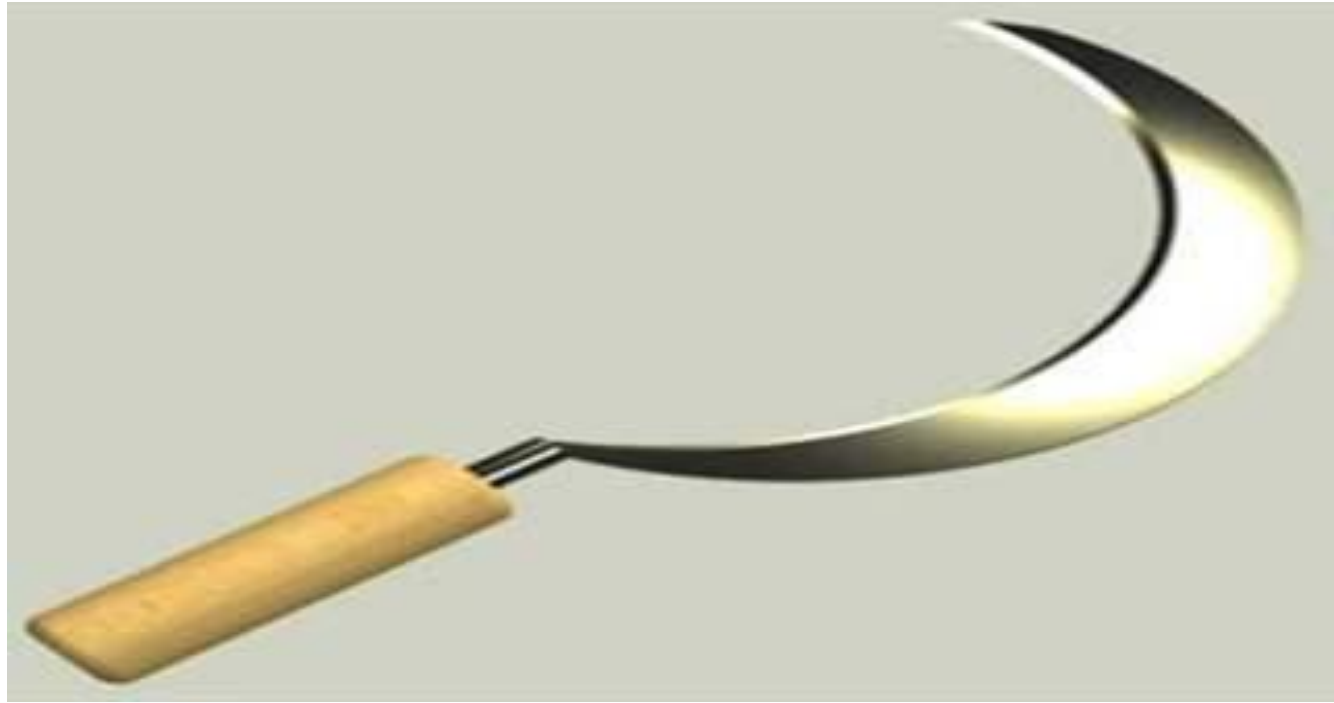


Figure 11-17. Floor of the cranial cavity internal aspect.  
In: Waxman SG. *Clinical Neuroanatomy*, 26<sup>th</sup> ed.  
<http://www.accessphysiotherapy.com>. Accessed  
October 20, 2009.

<b>Fold</b>	<b>Shape</b>	<b>Venous sinuses enclosed</b>
<b>Falx cerebri</b>	<b>Sickle-shaped</b>	<b>Superior sagittal, inferior sagittal and straight sinuses</b>
<b>Tentorium cerebelli</b>	<b>Tent-shaped (semilunar)</b>	<b>Transverse and superior petrosal sinuses</b>
<b>Falx cerebelli</b>	<b>Sickle-shaped</b>	<b>Occipital sinus</b>
<b>Diaphragma sellae</b>	<b>Horizontal fold</b>	<b>Anterior and posterior intercavernous sinuses</b>

Shapes of dural folds and enclosed venous sinuses



# 3D design Tentorium Cerebelli and Fa

